

## KANGAROO POINT PRIVATE CINEMA



### INITIAL PROJECT REQUIREMENT

The objective was to realise a reference-grade commercial cinema experience within a private residence, combining uncompromising audio-visual performance with a refined architectural outcome. The brief demanded a room capable of delivering true theatrical scale and immersion, while integrating seamlessly into the home's design language. Every element needed to balance technical precision with comfort and elegance, resulting in a space that is cinematic, inviting and visually striking without drifting into overtly futuristic styling.

### PROJECT OBJECTIVES

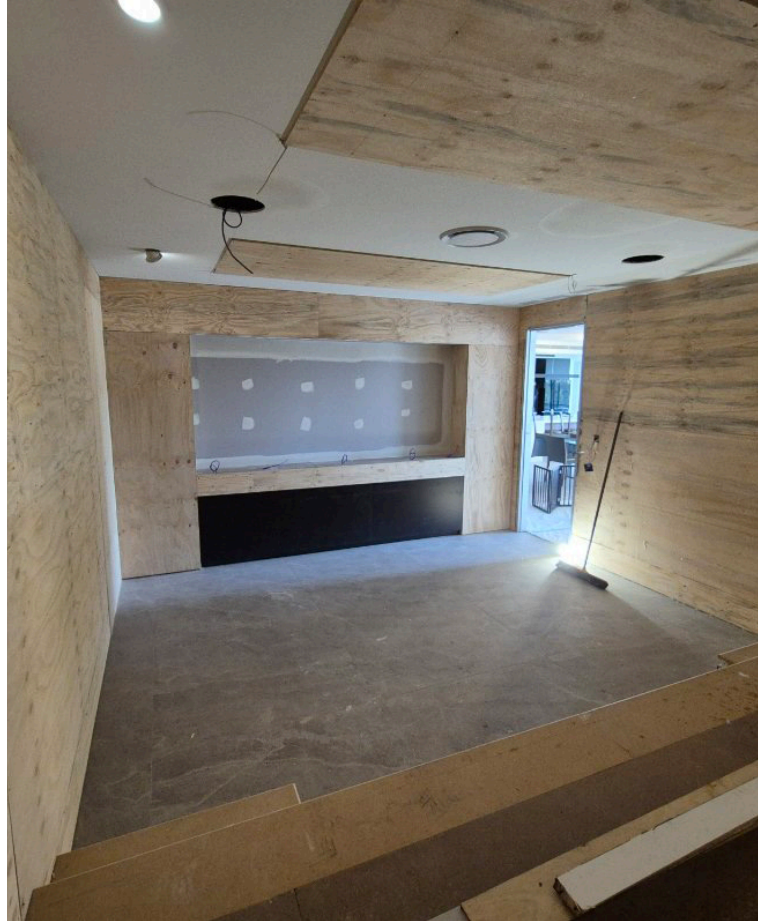
The Private Residential Client had no prior experience with home cinema systems and placed a high level of trust in the design team. With minimal constraints, the brief was refreshingly simple: **“Make it look cool — but not too Star Trek’y.”** This freedom allowed the team to focus on performance-driven design while ensuring the space remained inviting and timeless.

### PRODUCT SELECTION AND SYSTEM RATIONALE

The system architecture leverages proven, high-performance components to accurately replicate a commercial cinema environment within a residential setting. Precision cinema loudspeakers were selected for their ability to reproduce dynamic, accurate sound across the full frequency range, providing both impact and clarity for large-format media. Advanced audio processing, including room correction and calibration, was implemented to optimise performance for the space, ensuring consistent tonal balance and precise imaging in every seat. A flexible control platform provides seamless operation of audio, video and environmental elements from a single, intuitive interface, simplifying everyday use.

For the visual system, an **Optoma projection solution** was paired with a premium **Grandview screen**, combining high brightness, exceptional detail and excellent contrast. Together, they create an immersive, true-to-life image that perfectly complements the audio performance and completes the cinematic environment.

## KANGAROO POINT PRIVATE CINEMA



## KANGAROO POINT PRIVATE CINEMA



## KANGAROO POINT PRIVATE CINEMA



### UNIQUE AND STANDOUT FEATURES

Several design elements elevate this project:

- **Sunray LED Ceiling Design**

A first for the team, this feature adds depth and visual impact to the space, becoming a defining design element.

- **Acoustically Transparent Fabric Walls**

Speakers and acoustic treatment are concealed behind fabric-wrapped walls, creating a clean aesthetic without compromising performance. While this concept can be difficult for clients to visualise, the finished result consistently exceeds expectations, and this project was no exception.

### CLIENT FEEDBACK

*“We couldn’t be any happier with the results. The sound is loud and clear, the picture is bright and clear, and the remote control brings it all together in a way we just didn’t know was possible.”*

Installation completed by Sydney City Audio Visual

[www.scav.com.au](http://www.scav.com.au)

Gary Patterson

[gary@scav.com.au](mailto:gary@scav.com.au)

0402 845 393

Acoustic Design by Paul Mclean, Kollosseum

[www.kollosseum.io/](http://www.kollosseum.io/)

Amber Technology

[www.ambertech.com.au](http://www.ambertech.com.au)

02 9998 7600



Grandview

Optoma